



NEWS REVIEW

**WORLD
ARCHITECTURE
NEWS.COM**

21 January 2014

Issue 469

Tell a friend about News Review
Best viewed as a web page. [CLICK HERE](#)

Top stories this week

Discovery, Khandala



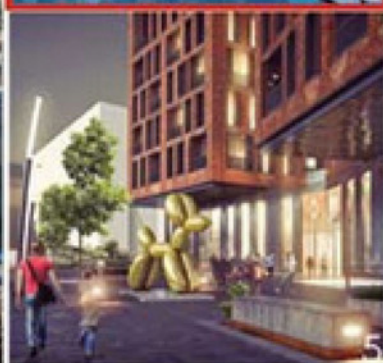
1 Shard Number 3, London, United Kingdom

The Sellar Property Group has commissioned architect Renzo Piano to design another tower as part of its regeneration of the London Bridge area. The 27-storey project is being dubbed Shard number three, as it will be Piano's third tower project in the area after his original 67-storey Shard, the tallest building in Western Europe, and the... [Read more](#)



2 Monsoon Retreat, Khandala, India

Set in the picturesque valleys of Khandala, nestled between Mumbai and Pune, this Monsoon Retreat is a spacious villa with a private swimming pool and evergreen gardens. The design of the villa was formulated on the seemingly anonymous concepts of privacy and openness. The orientation of the villa ensures total privacy... [Read more](#)

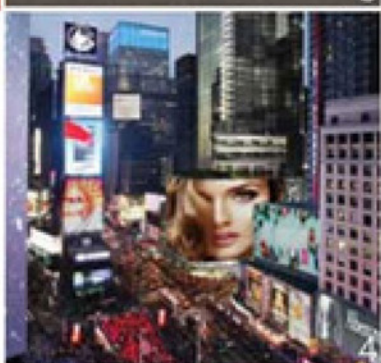


3 Comcast Innovation and Technology Center, Philadelphia, United States
Foster + Partners have unveiled their designs for 1,121 ft, 59-storey Comcast tower, commissioned by the Comcast Corporation and Liberty Property Trust. The glass and stainless steel tower will complement the neighbouring Comcast Center, the global headquarters of the Comcast Corporation... [Read more](#)



4 EDITION Hotel, Times Square, New York, United States

The Marriott International hotel group, hotelier and real estate developer Ian Schrager and real estate and investment firms The Wilkoff Group, Winthrop Realty Trust, New Valley LLC and Maefield Development have announced plans for a second EDITION Hotel in New York City. The new hotel will be located... [Read more](#)



5 Taj Residential, Tehran, Iran
The housing market in Iran and, in particular in Tehran, has been subject to the many price fluctuations in the country, with land and rental values thought to have surged by around 81% and almost 245%, respectively, over the past few years. This has meant that the housing market has remained buoyant despite all the recent economical difficulties. When the client... [Read more](#)



OPEN NOW TEMPORARY WORKS CATEGORY

**WORLD
INFRASTRUCTURE
AWARDS 2014**

MONSOON RETREAT



DISCOVERY, Khandala

Thursday 16 Jan 2014



Set in the picturesque valleys of Khandala, nestled between Mumbai and Pune, the Monsoon Retreat designed by Abraham John Architects is a spacious villa with a private swimming pool and evergreen gardens. The design of the villa was formulated on the seemingly antonymous concepts of privacy and openness. The orientation of the villa ensures total privacy, while maximizing existing views, creating a sense of openness and belonging to nature. The tree-lined road leading up to the villa introduces the built mass as a solid core; it is only upon entering the premises that one suddenly experiences the expanse of double height volume and the indoor-outdoor feel.

The living room was conceived as an "outdoor space" with abundant light and natural ventilation and opens onto decks and gardens on either side. A continuous wall serves as a textured backdrop to the living room and continues onto the deck, lending it a rustic feel. The cantilevered wood and steel staircase connecting the two floors is set against imposing double height windows; it is bathed in light, allowing luxuriant indoor plants to thrive. The indoor courtyard pathway continues from the staircase area towards the garden. Showers of light are suspended from the ceiling creating a serene ambience.

The Dining Room suspends over the private pool, giving the room an island-like feel. The Dining island becomes an exotic "outdoor" space where one can enjoy the breeze, the proximity to the water and to the greenery. Three bedrooms are situated on the first floor. The master bedroom is separated from the other two bedrooms via a bridge that spans across the double height space of the living room. A walk-on skylight is a unique feature between the bedroom and the terrace overlooking the garden.

The villa is designed in response to site conditions. Sloping roofs have been designed to withstand the extreme monsoons rains experienced in the area. Indoor and outdoor boundaries disappear as every room opens up to a private outdoor space. Outdoor decks and landscaped gardens serve as expansive entertaining areas with artful illumination and mood lighting. Indoor courtyards, skylights and double height sliding-folding windows add to the outdoor feel. Light and shadow add warmth and texture.

Spaces created harmonise with their surroundings and encourage sustainability by using "green" materials that accentuate warmth & transparency, whilst ageing beautifully; natural sandstone and engineered wooden flooring, large sliding and double-glazed windows, which cut down on solar radiation and air conditioning load, allowing for uninterrupted views and access to landscaped areas; automation and LED lights reduce electrical consumption.

